

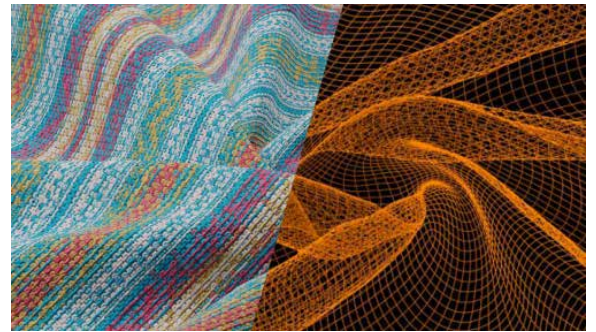
The following is an introduction to noteworthy features of APEXFiz Design software version V-02.

For other new features, please refer to the Help menu in the Design software for details.

Export for U3M (Circular Knitting Simulation)

■ Supported Plans: [Design-Weave](#) [Design Pro](#)

U3M file export—already popular for weave simulation—is now available for circular knitting as well. Various map images and U3M files (management files of various map images) can be exported for running circular knitting simulations. If you use these files when draping materials to objects in 3D software, you will be able to express amazingly realistic images such as the natural unevenness and texture of the fabric.



Select fabric

■ Supported Plans: [Design-Standard](#) [Design-Knit](#) [Design-Weave](#) [Design Pro](#) [3D \(option\)](#)

Fabric data can now be selected in U3M format and applied to each part in SHIMA SEIKI's 3D software (3D Modelist, PGM, 3D Mapping Editor).

V-01 : Weave simulation image applied

V-02 : U3M-format file applied
(Gloss information is included in roughness map)

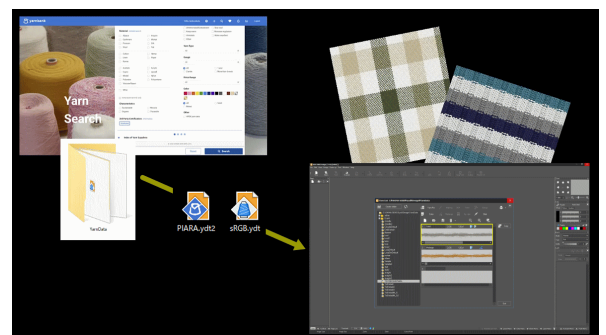


Yarn List menu / Yarn Twisting menu

■ Supported Plans: [Design Jr.](#) [Design-Standard](#) [Design-Knit](#) [Design-Weave](#) [Design Pro](#)

Saving yarn files to the yarn list has become easier. Simply double-click on a yarn file downloaded from yarnbank, or drag & drop it into the design software and it will be registered automatically in the yarn list. You can use it for fabric simulations immediately!

In addition, yarn files downloaded from yarnbank can now be used as material for creating twisted yarn.



Big cable pattern / Basket pattern (Loop Simulation)

■ Supported Plans: [Design Jr.](#) [Design-Knit](#) [Design Pro](#)

More big cable and basket patterns are added with improved 3D quality.



Auto-transform by Shading / Lock/Unlock the number of screens

■ Supported Plans: [Design-Standard](#) [Design-Knit](#) [Design-Weave](#) [Design Pro](#)

[Auto-transform by Shading] has been expanded from three to seven levels, allowing for more detailed adjustment. Unevenness and wrinkles of the original fabric photo can now be reproduced more realistically.

The number of screens on display can now be fixed/locked as well. The number of screens can now be maintained even when a model is copied or deleted.



Export to Browser

■ Supported Plans: [Design-Knit](#) [Design Pro](#) [3D \(option\)](#)

3D loop simulation images are displayed as html files and can be dragged onto your browser window for viewing from various angles.

